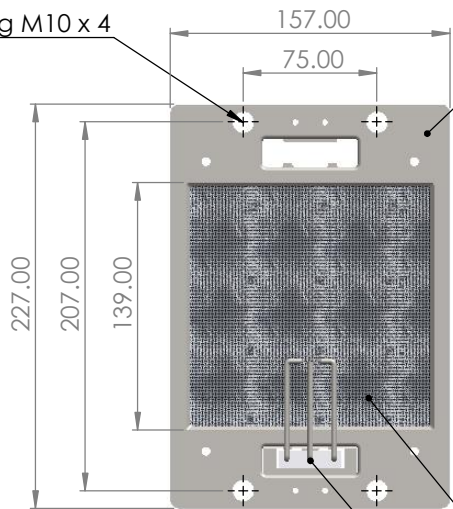
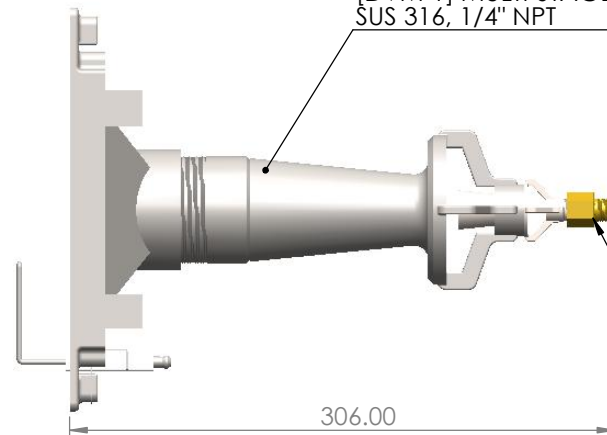


Mounting M10 x 4 [MFB150-LX] CC MOUNT PLATE & LOCKED FRAME



[DVM-1] MULTI-STAGE VENTURI GAS MIXER 2" SUS 316, 1/4" NPT



[NOZ1] BRASS NOZZLE NO.1

WOVEN FABRIC 2100 g/sq.m (FIBERTECH WFF1-20) KOREA

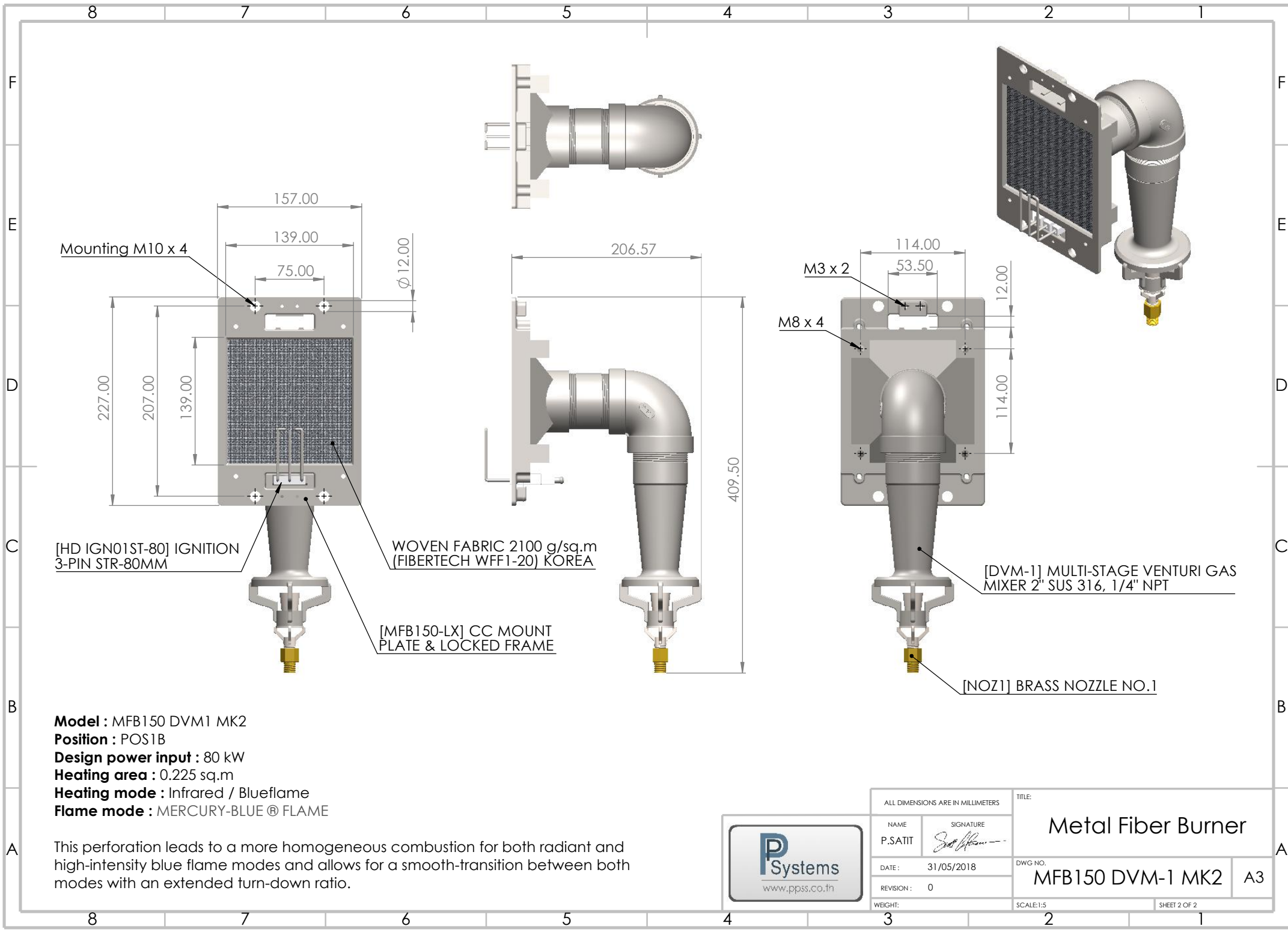
[HD IGN01ST-80] IGNITION 3-PIN STR-80MM

**Model :** MFB150 DVM1 MK2  
**Position :** POS1A  
**Design power input :** 80 kW  
**Heating area :** 0.225 sq.m  
**Heating mode :** Infrared / Blueflame  
**Flame mode :** MERCURY-BLUE® FLAME

This perforation leads to a more homogeneous combustion for both radiant and high-intensity blue flame modes and allows for a smooth-transition between both modes with an extended turn-down ratio.



ALL DIMENSIONS ARE IN MILLIMETERS		TITLE:	
NAME	SIGNATURE	Metal Fiber Burner	
P.SATIT	<i>[Signature]</i>	DWG NO.	A3
DATE:	31/05/2018	MFB150 DVM-1 MK2	
REVISION:	0		
WEIGHT:		SCALE:1:5	SHEET 1 OF 2



**Model :** MFB150 DVM1 MK2  
**Position :** POS1B  
**Design power input :** 80 kW  
**Heating area :** 0.225 sq.m  
**Heating mode :** Infrared / Blueflame  
**Flame mode :** MERCURY-BLUE ® FLAME

This perforation leads to a more homogeneous combustion for both radiant and high-intensity blue flame modes and allows for a smooth-transition between both modes with an extended turn-down ratio.



ALL DIMENSIONS ARE IN MILLIMETERS		TITLE:	
NAME	SIGNATURE	Metal Fiber Burner	
P.SATIT	<i>[Signature]</i>	DWG NO.	A3
DATE:	31/05/2018	MFB150 DVM-1 MK2	
REVISION:	0		
WEIGHT:		SCALE:1:5	SHEET 2 OF 2