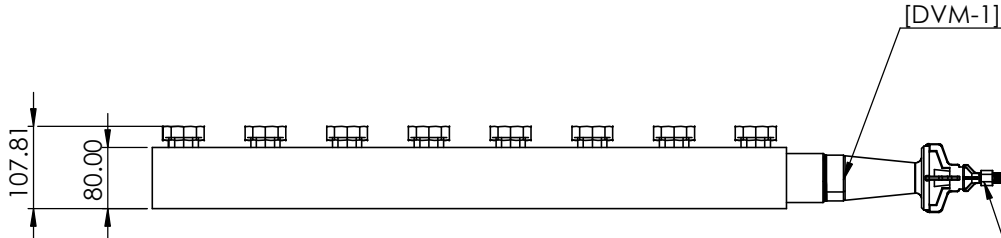
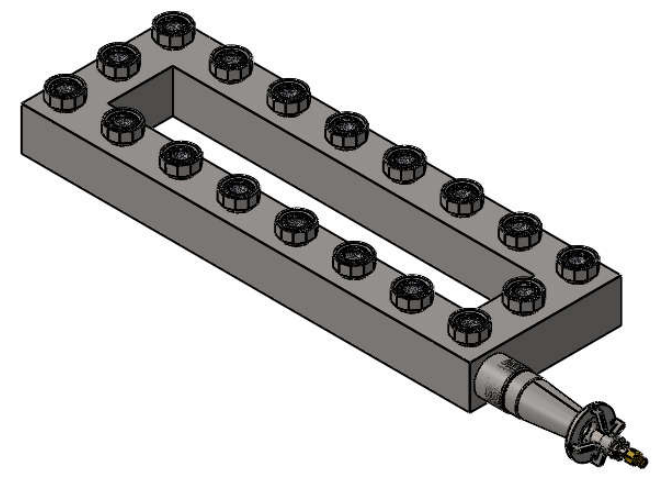
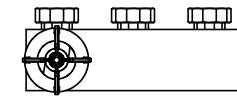


[MFB-K-100] SPEAR-BLUE ® FLAME
METAL FIBER BURNER HEAD DIA38
Detail in sheet 6



[DVM-1] MULTI-STAGE VENTURI GAS MIXER 2" SUS 316, 1/4" BSPT



[NOZ1] BRASS NOZZLE NO.01

Model : MFB830-280-18-EX
Heating mode : Blueflame
Heating area : 0.03136 sq.m
Design power input : 62.88 kW
Flame mode : SPEAR-BLUE ® FLAME

SPEAR-BLUE ® FLAME
The major part of the convective energy released when using blue flame mode on high porous metal fiber produces a distant, spear-shaped flame. PP Systems' special design, with an infrared ring surrounding the base achieves wider turn-down ratio and allow for better resistance in high wind operation.

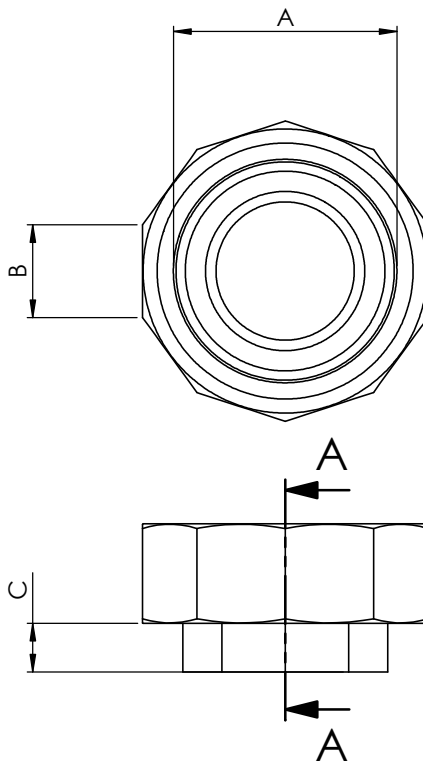
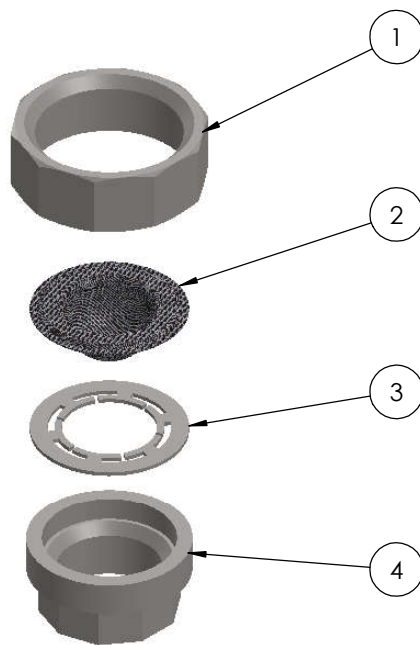


ALL DIMENSIONS ARE IN MILLIMETERS			TITLE:	
NAME		SIGNATURE		
Drawn	P.JATURONK	Jaturonk		
Improvement	P.SATIT	Satit P.		
DATE: 1/7/2563	REVISION: 0	DWG NO.		A3
WEIGHT:		SCALE:1:10		SHEET 5 OF 7

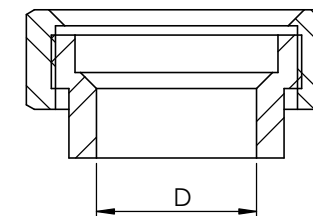
Metal Fiber Burner

MFB830-280-18-EX

PART NUMBER	DIMENSION (MM)				AREA (SQ.M)	POWER INPUT (KW) LPG CONSUME (KGPH)	
	A	B	C	D		INFRARED MODE	BLUE FLAME MODE
MFB-K-025	21.2	31.23	24.80	11.4	0.0002835	0.06 0.004	0.57 0.037
MFB-K-038	23.8	36.80	27.50	14.8	0.0003801	0.08 0.005	0.76 0.050
MFB-K-050	28.0	39.32	29.70	18.5	0.0004909	0.10 0.006	0.98 0.064
MFB-K-075	36.0	49.42	29.30	24.0	0.0007548	0.15 0.010	1.51 0.099
→ MFB-K-100	41.8	56.15	31.20	29.9	0.0011341	0.23 0.015	2.27 0.148
MFB-K-125	53.6	70.13	35.20	38.7	0.0019635	0.39 0.026	3.93 0.257
MFB-K-150	60.0	78.33	36.20	45.3	0.0023758	0.48 0.031	4.75 0.311
MFB-K-200	69.2	86.54	39.70	56.5	0.0033183	0.66 0.043	6.64 0.434



SECTION A-A



ITEM NO.	PART NUMBER	DESCRIPTION	Material	QTY.
1	UX Top	SUS UNION TOP	AISI 304	1
2	MFD-K-XX	KNITTED FABRIC 1300 g/sq.m	KNITTED FABRIC	1
3	RK-UX	SUS RING THK 1.2MM		1
4	UX Base	SUS UNION BASE	AISI 304	1



ALL DIMENSIONS ARE IN MILLIMETERS				TITLE:	
Drawn	NAME	SIGNATURE	Metal Fiber Burner		
Improvement	P.JATURONK	Jaturonk			
DATE: 1/7/2563	REVISION: 1	Satit P.	DWG NO. UX Series Burner		A3
WEIGHT:	SCALE:1:1	SHEET 1 OF 2			