

Model : MFB15R-MX-02
 Position : POS1B
 Design power input : 5.30 kW
 Heating area : 0.000177 sq.m
 Heating mode : blueframe
 Flame mode : SPEAR-BLUE® FLAME

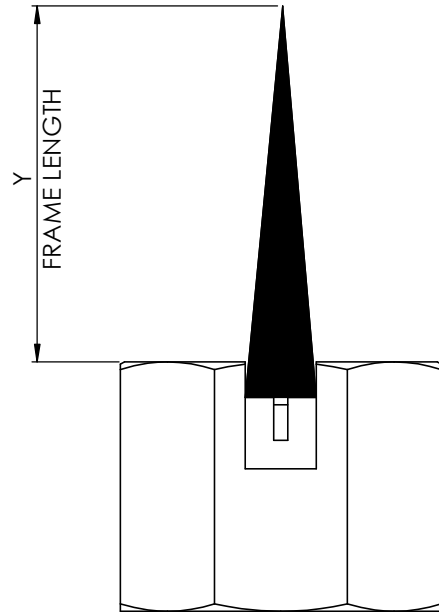
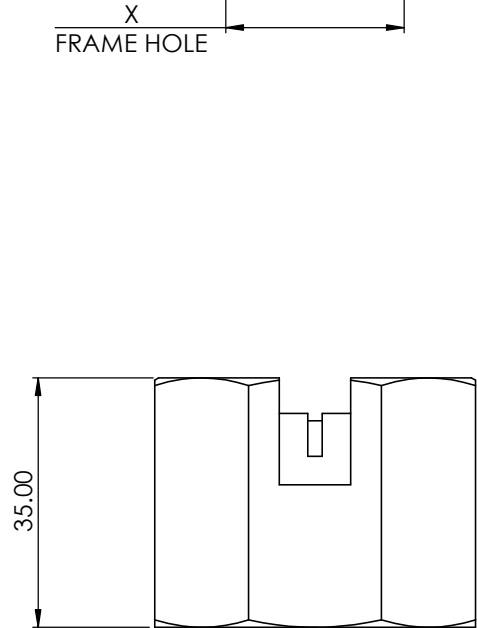
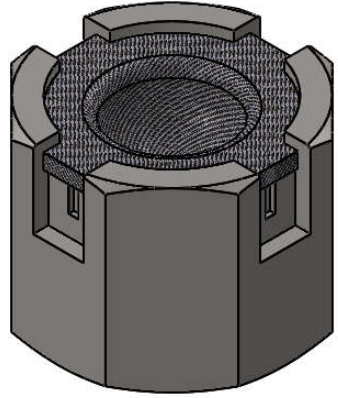
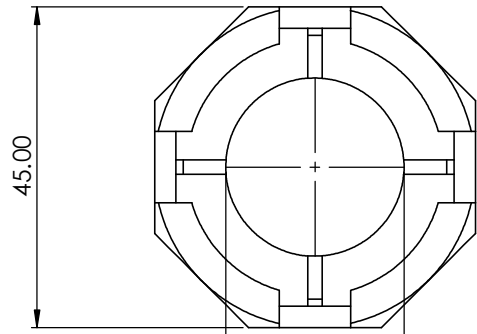
The major part of the convective energy released when using blue flame mode on high porous metal fiber produces a distant, spear-shaped flame. PP Systems' special design, with an infrared ring surrounding the base achieves wider turn-down ratio and allow for better resistance in high wind operation.

This drawing is the property of PP Systems. Any complete or partial reproduction is forbidden.



PYRO precision
 advanced surface combustion technologies

ALL DIMENSIONS ARE IN MILLIMETERS			TITLE:	
NAME	SIGNATURE		Metal Fiber Burner	
Drawn	P.JATURONK	Jaturonk		
Improvement	P.SATIT	Satit P.	DWG NO.	MFB15R-MX-02-D001 A3
DATE: 19/1/2021	REVISION: 0		SCALE:1:2	
WEIGHT:			SHEET 1 OF 2	



MODEL	X - FRAME HOLE (mm.)	POWER INPUT (kW)	CONSUMPTION (kg/hr)	Y - FRAME LENGTH (mm.)
MFB10R	10	5.76	0.38	200
		10.76	0.70	260
		15.76	1.03	245
		20.76	1.36	-
MFB15R	15	5.76	0.38	190
		10.76	0.70	290
		15.76	1.03	370
		20.76	1.36	430
MFB20R	20	5.76	0.38	160
		10.76	0.70	250
		15.76	1.03	345
		20.76	1.36	450
MFB25R	25	5.76	0.38	170
		10.76	0.70	265
		15.76	1.03	350
		20.76	1.36	465

This drawing is the property of PP Systems. Any complete or partial reproduction is forbidden.



ALL DIMENSIONS ARE IN MILLIMETERS		TITLE:	
	NAME	SIGNATURE	Metal Fiber Burner
Drawn	P.JATURONK	<i>Jaturonk</i>	
Improvement	P.SATIT	<i>Satit P.</i>	DWG NO.
DATE: 19/1/2021	REVISION: 0	MFBXXR Connector A3	
WEIGHT:	SCALE:2:1	SHEET 2 OF 2	