

8 7 6 5 4 3 2 1

F

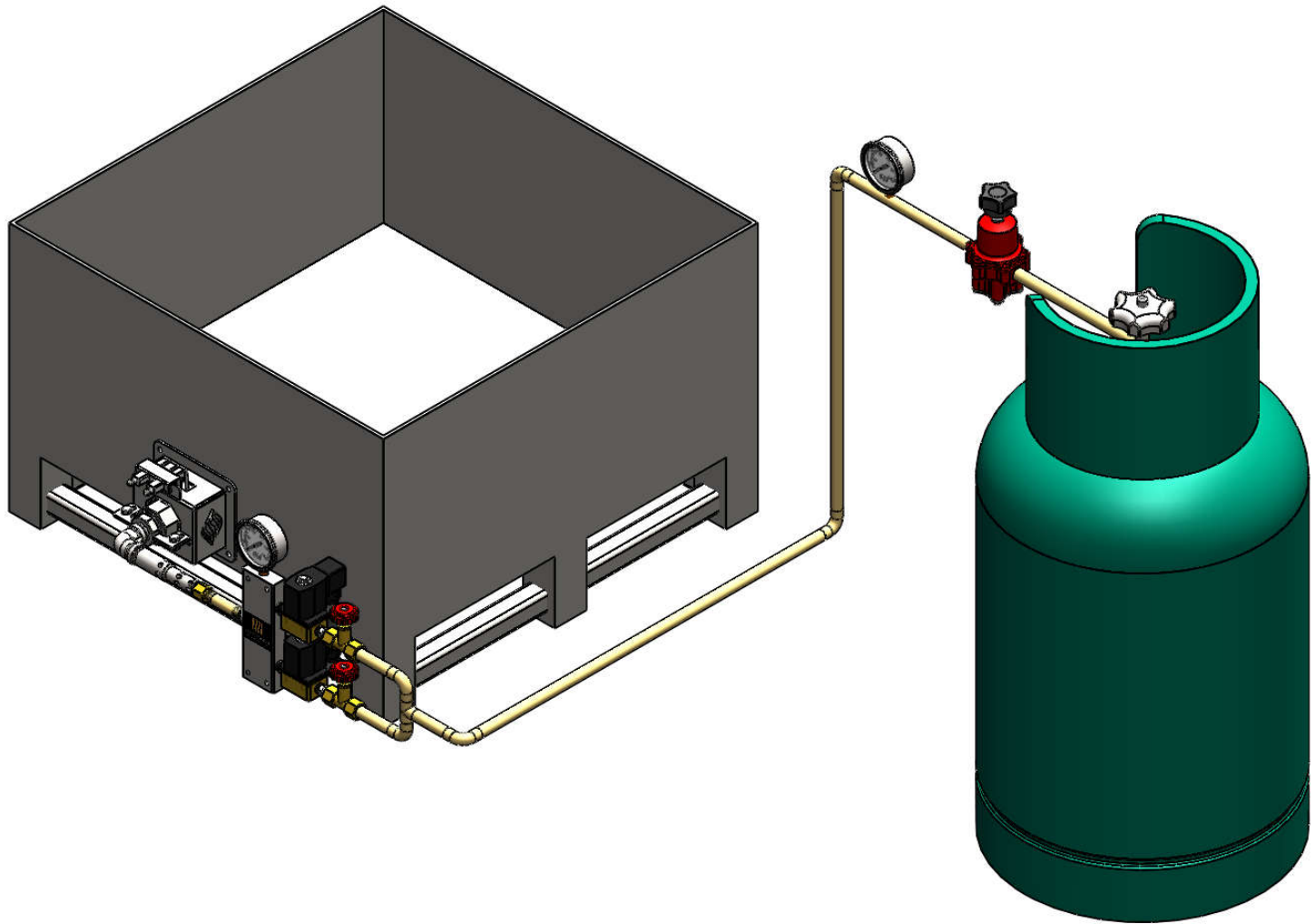
E

D

C

B

A

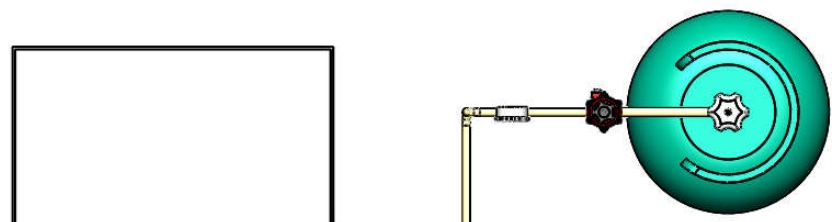


This drawing is the property of PP Systems. Any complete or partial reproduction is forbidden.

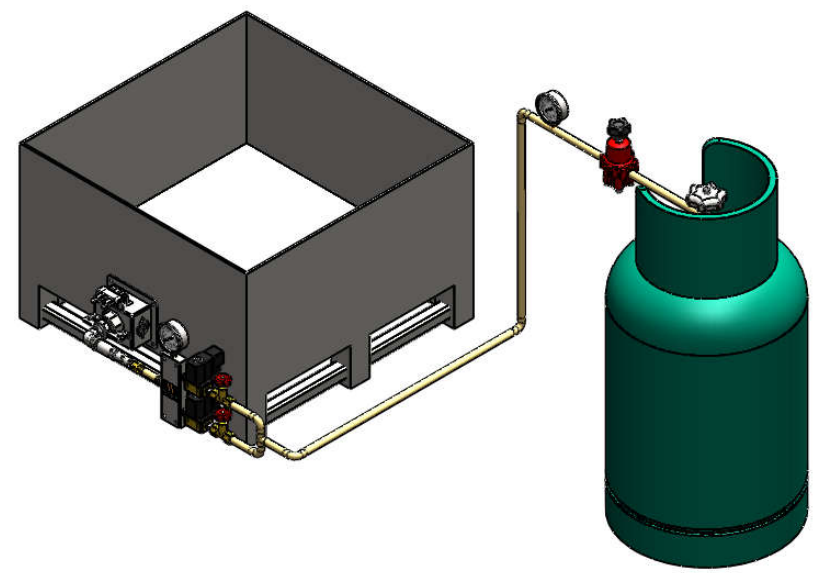


ALL DIMENSIONS ARE IN MILLIMETERS		TITLE:	
NAME	SIGNATURE	Metal Fiber Burner	
Drawn P.JATURONK	Jaturonk		
Improvement P.SATIT	Satit P.	DWG NO.	MFB15R-MX-02-S001
DATE: 19/1/2021	REVISION: 0	A3	
WEIGHT:		SCALE:1:20	SHEET 1 OF 5

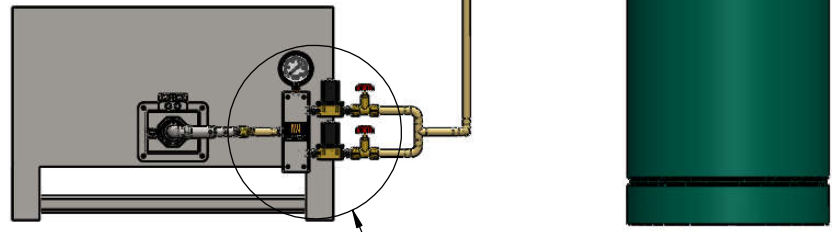
8 7 6 5 4 3 2 1



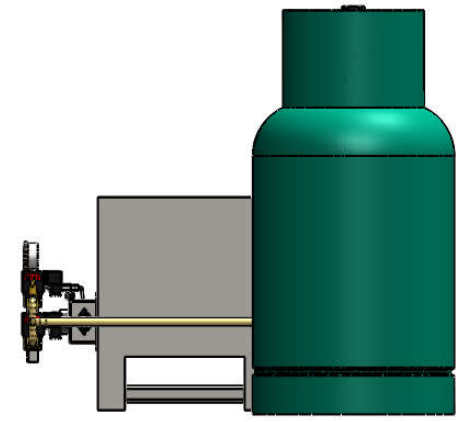
**GAS SUPPLY HP SYSTEM  
DETAIL AT SHEETS 5**



**BURNER  
MFB15R-MX-02  
DETAIL AT SHEET 4**



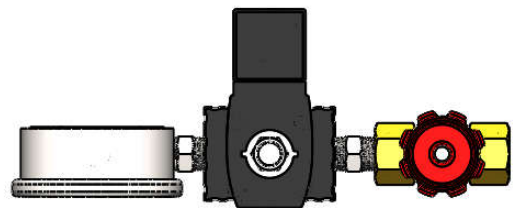
**GASTRAIN SYSTEM  
HW-GT-001-6013  
DETAIL AT SHEETS 3**



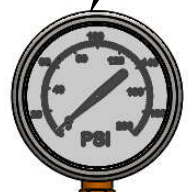
*This drawing is the property of PP Systems. Any complete or partial reproduction is forbidden.*



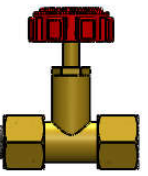
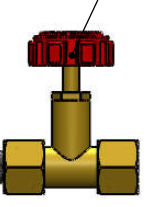
ALL DIMENSIONS ARE IN MILLIMETERS		TITLE:	
NAME	SIGNATURE	Metal Fiber Burner	
Drawn P.JATURONK	<i>Jaturonk</i>		
Improvement P.SATIT	<i>Satit P.</i>	DWG NO.	A3
DATE: 19/1/2021	REVISION: 0	MFB15R-MX-02-S001	
WEIGHT:	SCALE:1:20	SHEET 2 OF 5	



[DS63A-0-25] P/GAUGE 0-25BAR  
1/4"NPT, ITALY "NUOVA FIMA"

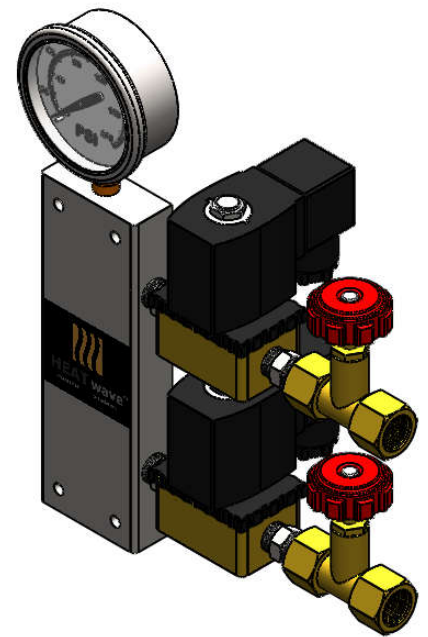
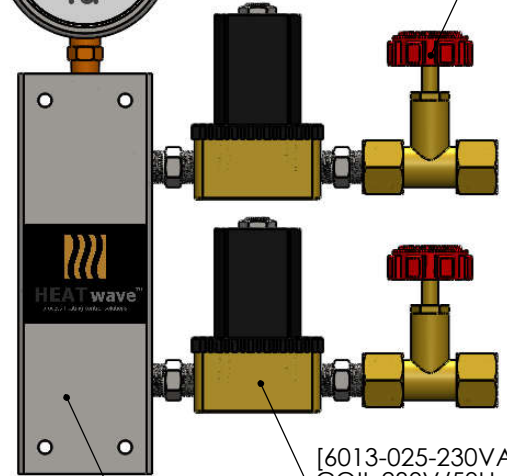


[KRR-VLV01] Brass Needle Valve  
1/4", PTFE Seat for Gas



[6013-025-230VAC] SOLENOID VALVE 2/2, SIZE 1/4"  
COIL 230V/50Hz - ORIFICE 3MM "BURKERT" Germany

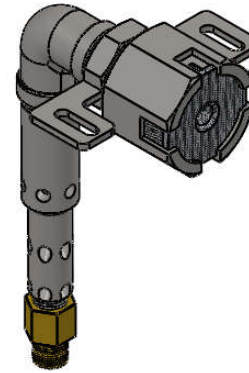
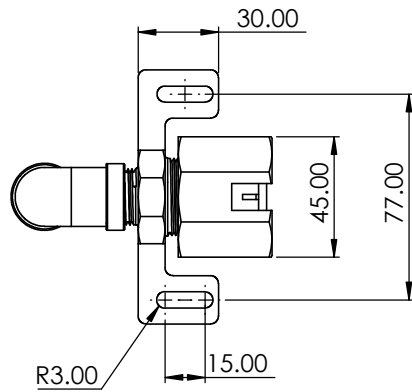
[HW-GT-001] Monoblock Gas Train Manifold 1/4"



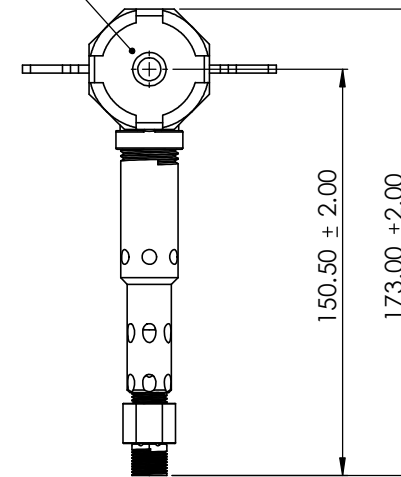
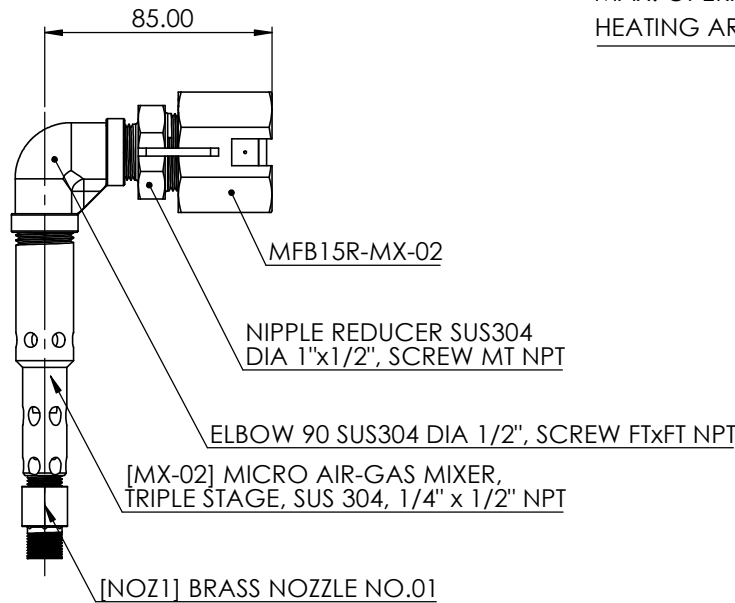
This drawing is the property of PP Systems. Any complete or partial reproduction is forbidden.



ALL DIMENSIONS ARE IN MILLIMETERS		TITLE:	
NAME	SIGNATURE	Metal Fiber Burner	
Drawn P.JATURONK	Jaturonk		
Improvement P.SATIT	Satit P.	DWG NO.	A3
DATE: 19/1/2021	REVISION: 0	HW-GT-001-6013	
WEIGHT:	SCALE:1:2	SHEET 3 OF 5	



WOVEN FABRIC 2100 g/sq.m  
 MAX. OPERATING 1,100°C  
 HEATING AREA 176.7mm<sup>2</sup>



Model : MFB15R-MX-02  
 Position : POS1B  
 Design power input : 5.30 kW  
 Heating area : 0.0001767 sq.m  
 Heating mode : blueframe  
 Flame mode : SPEAR-BLUE® FLAME

The major part of the convective energy released when using blue flame mode on high porous metal fiber produces a distant, spear-shaped flame. PP Systems' special design, with an infrared ring surrounding the base achieves wider turn-down ratio and allow for better resistance in high wind operation.

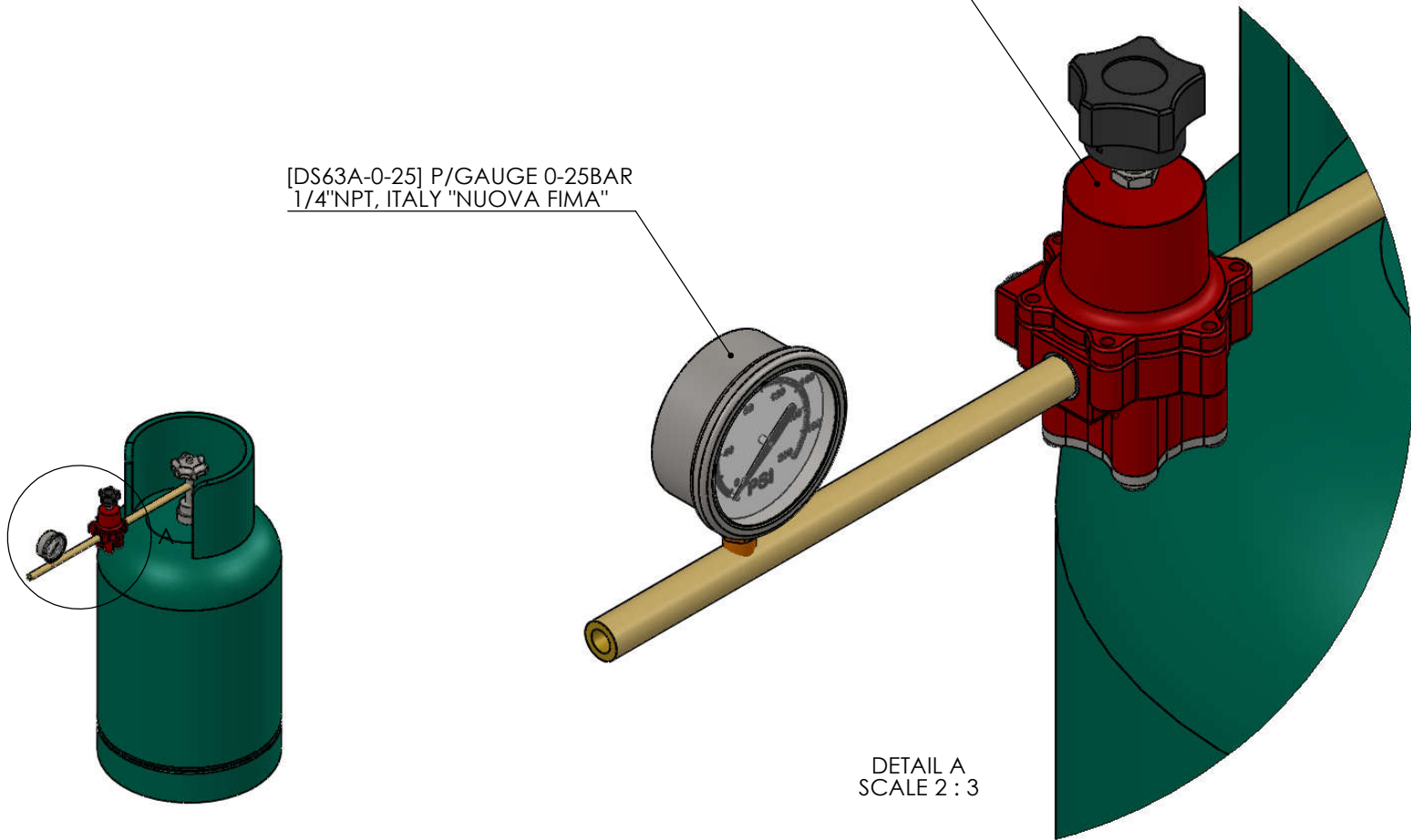
This drawing is the property of PP Systems. Any complete or partial reproduction is forbidden.



ALL DIMENSIONS ARE IN MILLIMETERS			TITLE:	
NAME	SIGNATURE	Metal Fiber Burner		
Drawn	P.JATURONK	Jaturonk		
Improvement	P.SATIT	Satit P.		
DATE: 19/1/2021	REVISION: 0	DWG NO.	MFB15R-MX-02	
WEIGHT:	SCALE:1:2	A3		
		SHEET 4 OF 5		


[67CH/743] HIGH P.REGULATOR 5-35 PSI (0.3-2.4 BAR),  
1/4" NPT, PROPANE CAPACITIES 219kW "FISHER"

[DS63A-0-25] P/GAUGE 0-25BAR  
1/4"NPT, ITALY "NUOVA FIMA"



DETAIL A  
SCALE 2 : 3

This drawing is the property of PP Systems. Any complete or partial reproduction is forbidden.

 <b>PYRO precision</b> <small>advanced surface combustion technologies</small>	ALL DIMENSIONS ARE IN MILLIMETERS		TITLE:	
	NAME	SIGNATURE	Metal Fiber Burner	
	Drawn P.JATURONK	<i>Jaturonk</i>		
	Improvement P.SATIT	<i>Satit P.</i>	DWG NO.	MFB15R-MX-02-S001 A3
DATE: 19/1/2021	REVISION: 0	SCALE: 1:10	SHEET 5 OF 5	