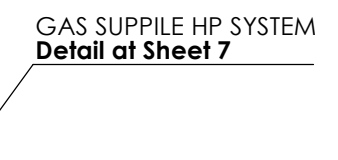
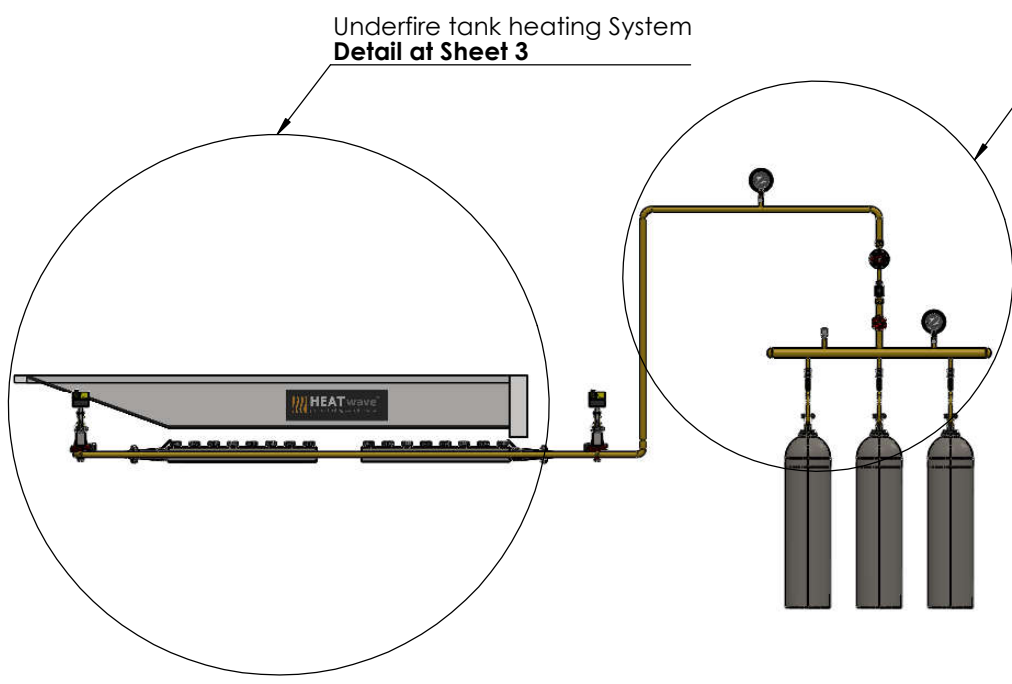
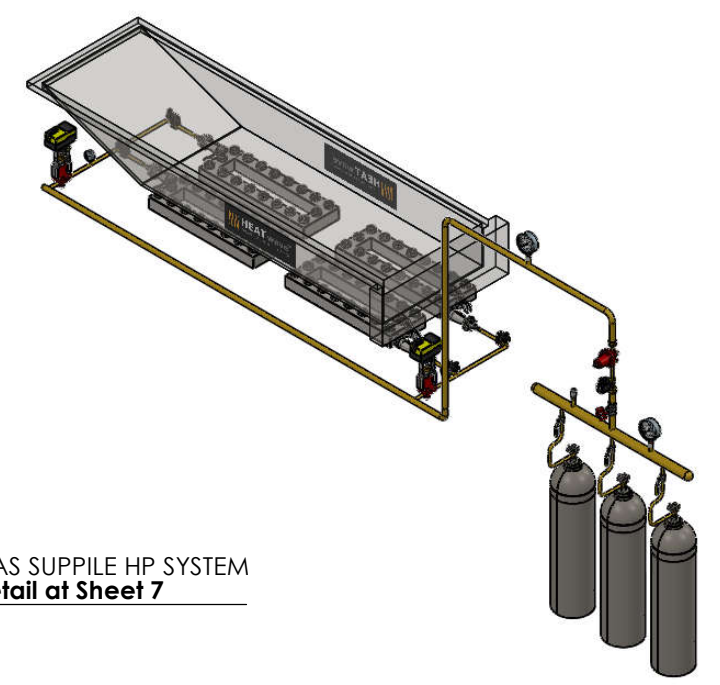
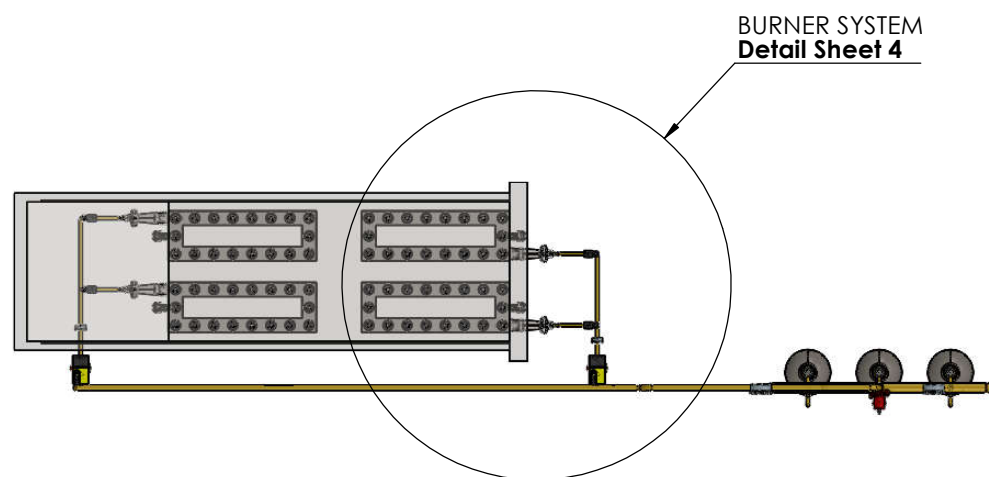


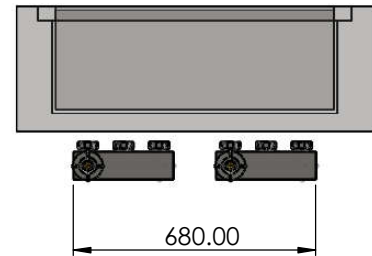
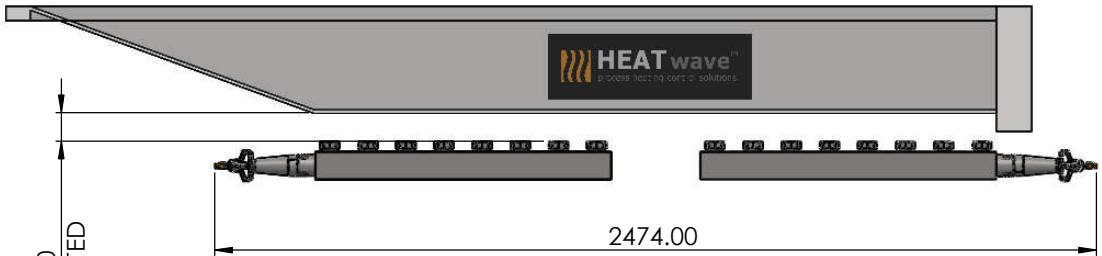
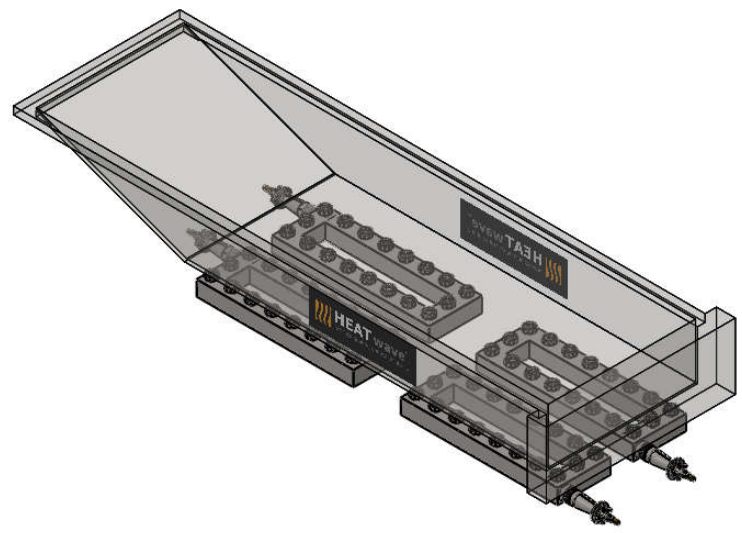
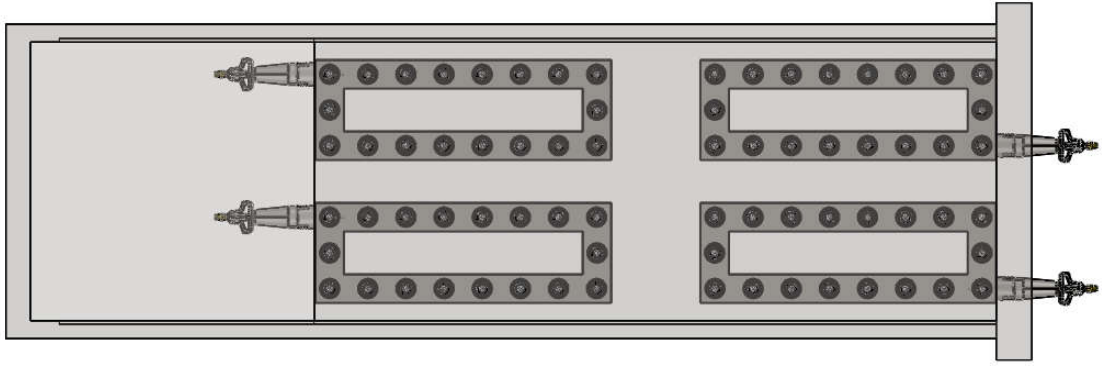
ALL DIMENSIONS ARE IN MILLIMETERS			TITLE:	
Drawn	NAME P.JATURONK	SIGNATURE <i>Jaturonk</i>	Metal Fiber Burner	
Improvement	P.SATIT	<i>Satit P.</i>	DWG NO.	J200618-D004
DATE: 1/7/2563	REVISION: 0	SCALE:1:50	SHEET 1 OF 7	
WEIGHT:				A3



Note : This drawing is the property of PP Systems. Any complete or partial reproduction, or any transmission to third party without PP Systems authorization is forbidden.



ALL DIMENSIONS ARE IN MILLIMETERS			TITLE:	
NAME	SIGNATURE		Metal Fiber Burner	
Drawn	P.JATURONK	Jaturonk		
Improvement	P.SATIT	Satit P.	DWG NO.	J200618-D004
DATE:	1/7/2563	REVISION:	0	
WEIGHT:			SCALE:1:50	SHEET 2 OF 7



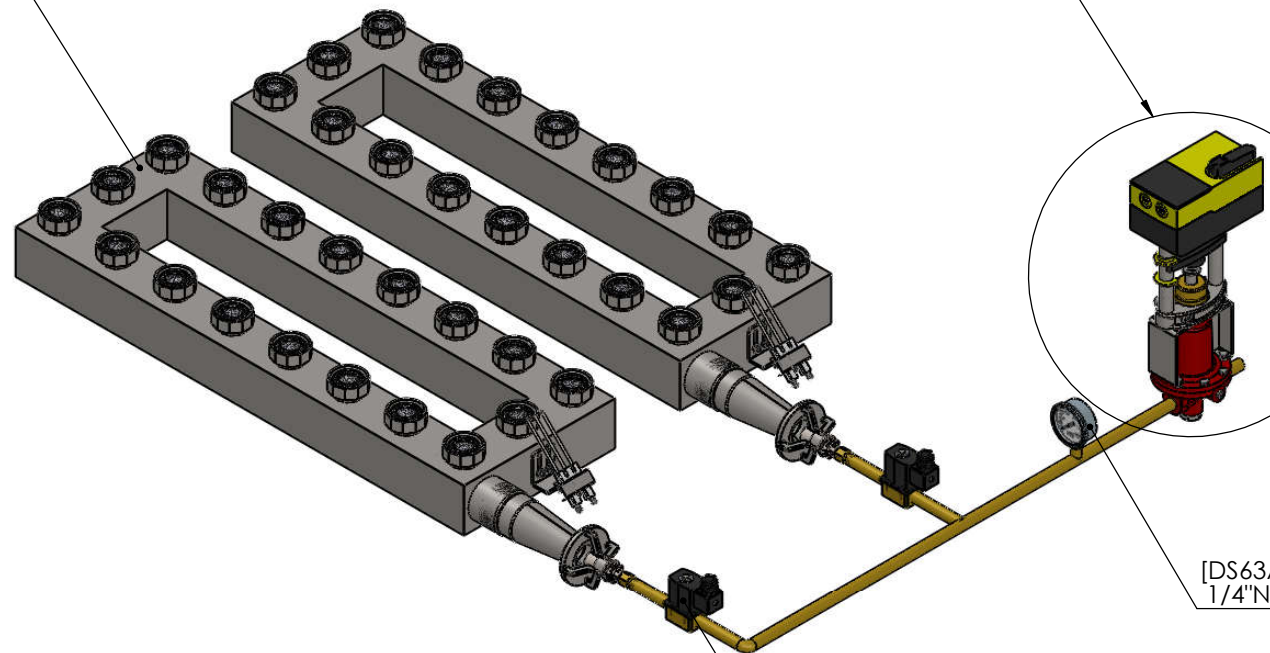
Note : This drawing is the property of PP Systems. Any complete or partial reproduction, or any transmission to third party without PP Systems authorization is forbidden.



ALL DIMENSIONS ARE IN MILLIMETERS			TITLE:	
NAME	SIGNATURE		Metal Fiber Burner	
Drawn	P.JATURONK <i>Jaturonk</i>			
Improvement	P.SATIT <i>Satit P.</i>		DWG NO.	A3
DATE: 1/7/2563	REVISION: 0		J200618-D004	
WEIGHT:			SCALE:1:50	SHEET 3 OF 7

MFB830-280-18-EX
Detail at Sheet 5

[BV-14-1PC-BSPT] BALL VALVE 1/4" 1-PC, REDUCE PORT,
1000WOG, S316 BODY PTFE SEAT, BSPT



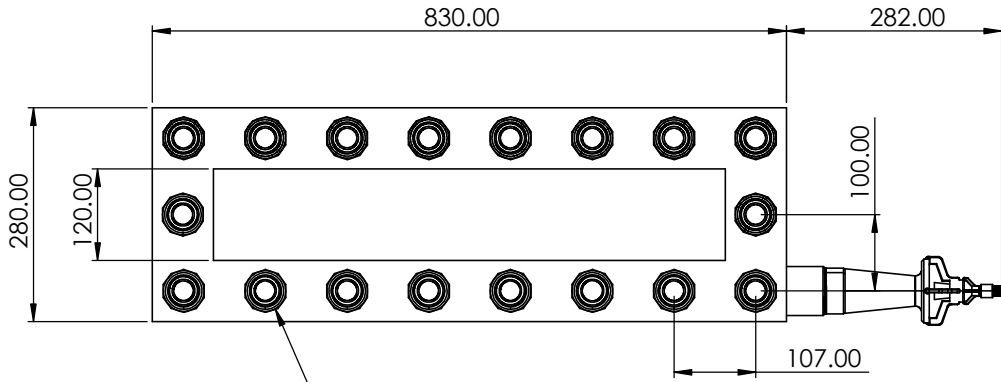
[DS63A-0-25] P/GAUGE 0-25BAR
1/4"NPT, ITALY "NUOVA FIMA"

[6013-025-230VAC] SOLENOID VALVE 2/2, SIZE 1/4"
COIL 230V/50Hz - ORIFICE 3MM "BURKERT" Germany

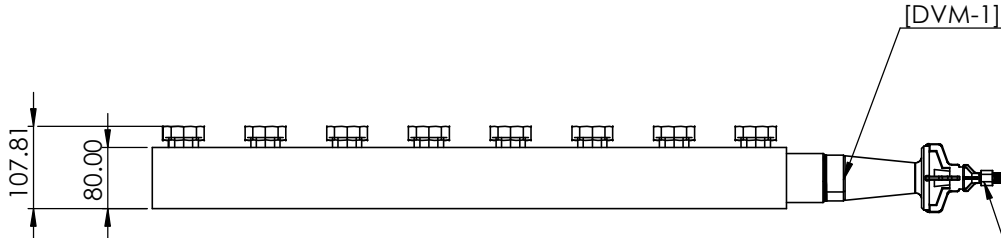
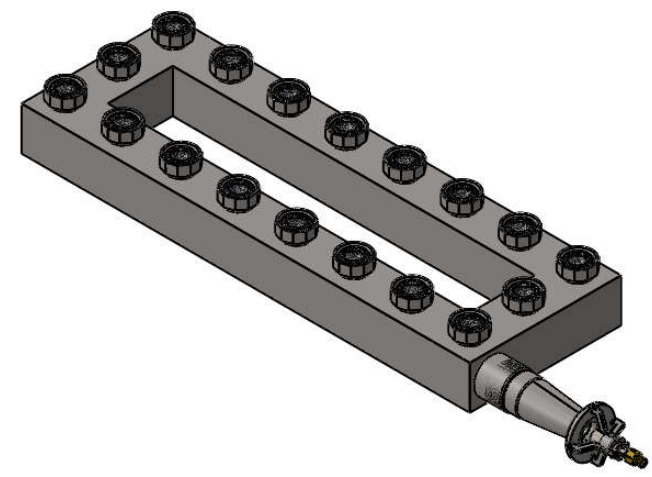
Note : This drawing is the property of PP Systems. Any complete or partial reproduction, or any transmission to third party without PP Systems authorization is forbidden.



ALL DIMENSIONS ARE IN MILLIMETERS			TITLE:	
NAME	SIGNATURE		Metal Fiber Burner	
Drawn	P.JATURONK	Jaturonk		
Improvement	P.SATIT	Satit P.	DWG NO.	J200618-D004
DATE: 1/7/2563	REVISION: 0		A3	
WEIGHT:			SCALE:1:20	SHEET 4 OF 7



[MFB-K-100] SPEAR-BLUE ® FLAME
METAL FIBER BURNER HEAD DIA38
Detail in sheet 6



[DVM-1] MULTI-STAGE VENTURI GAS MIXER 2" SUS 316, 1/4" BSPT

[NOZ1] BRASS NOZZLE NO.01

Model : MFB830-280-18-EX
Heating mode : Blueflame
Heating area : 0.03136 sq.m
Design power input : 62.88 kW
Flame mode : SPEAR-BLUE ® FLAME

SPEAR-BLUE ® FLAME
The major part of the convective energy released when using blue flame mode on high porous metal fiber produces a distant, spear-shaped flame. PP Systems' special design, with an infrared ring surrounding the base achieves wider turn-down ratio and allow for better resistance in high wind operation.

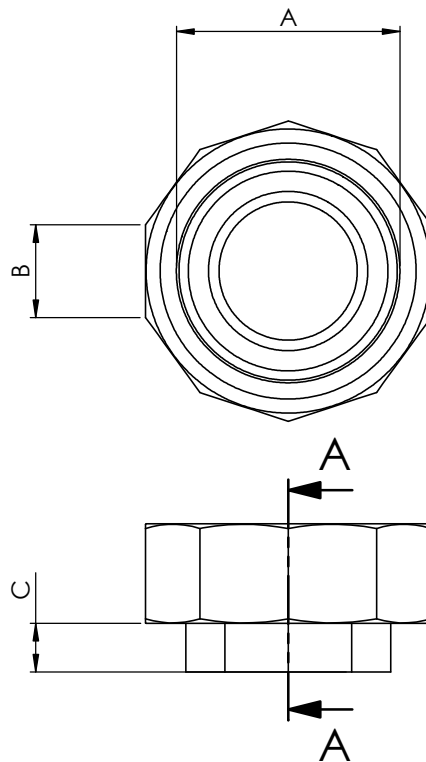
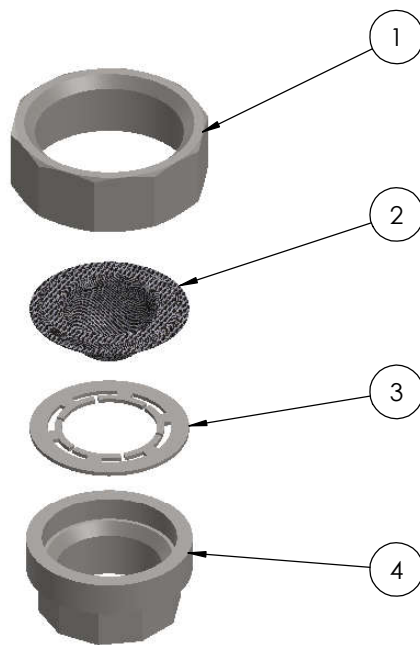


ALL DIMENSIONS ARE IN MILLIMETERS			TITLE:	
NAME		SIGNATURE		
Drawn	P.JATURONK	Jaturonk		
Improvement	P.SATIT	Satit P.		
DATE: 1/7/2563	REVISION: 0	DWG NO:		A3
WEIGHT:		SCALE:1:10		SHEET 5 OF 7

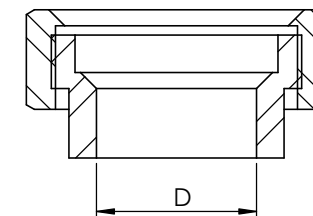
Metal Fiber Burner

MFB830-280-18-EX

PART NUMBER	DIMENSION (MM)				AREA (SQ.M)	POWER INPUT (KW) LPG CONSUME (KGPH)	
	A	B	C	D		INFRARED MODE	BLUE FLAME MODE
MFB-K-025	21.2	31.23	24.80	11.4	0.0002835	0.06 0.004	0.57 0.037
MFB-K-038	23.8	36.80	27.50	14.8	0.0003801	0.08 0.005	0.76 0.050
MFB-K-050	28.0	39.32	29.70	18.5	0.0004909	0.10 0.006	0.98 0.064
MFB-K-075	36.0	49.42	29.30	24.0	0.0007548	0.15 0.010	1.51 0.099
→ MFB-K-100	41.8	56.15	31.20	29.9	0.0011341	0.23 0.015	2.27 0.148
MFB-K-125	53.6	70.13	35.20	38.7	0.0019635	0.39 0.026	3.93 0.257
MFB-K-150	60.0	78.33	36.20	45.3	0.0023758	0.48 0.031	4.75 0.311
MFB-K-200	69.2	86.54	39.70	56.5	0.0033183	0.66 0.043	6.64 0.434



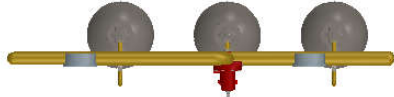
SECTION A-A



ITEM NO.	PART NUMBER	DESCRIPTION	Material	QTY.
1	UX Top	SUS UNION TOP	AISI 304	1
2	MFD-K-XX	KNITTED FABRIC 1300 g/sq.m	KNITTED FABRIC	1
3	RK-UX	SUS RING THK 1.2MM		1
4	UX Base	SUS UNION BASE	AISI 304	1

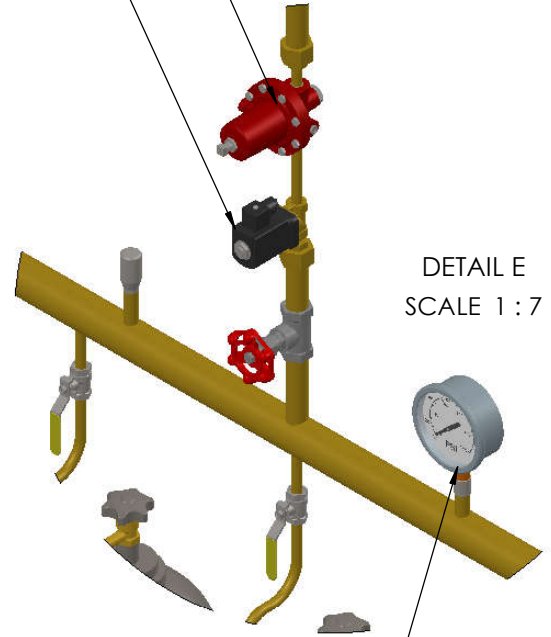
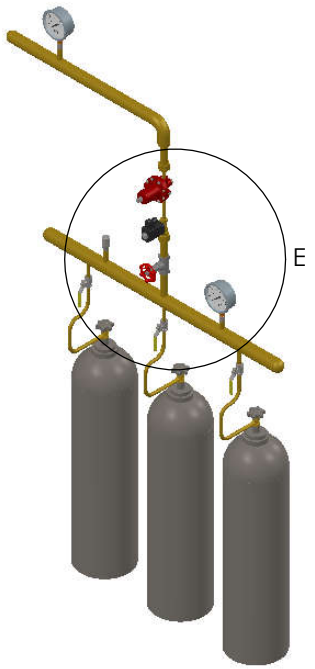
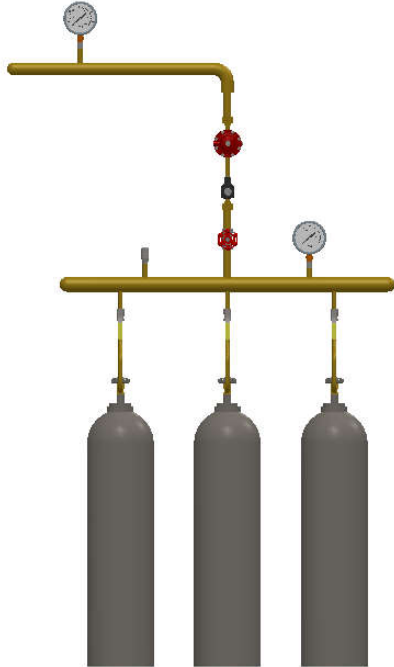


ALL DIMENSIONS ARE IN MILLIMETERS				TITLE:	
NAME	SIGNATURE	Metal Fiber Burner			
Drawn	P.JATURONK	Jaturonk			
Improvement	P.SATIT	Satit P.			
DATE: 1/7/2563	REVISION: 1	DWG NO.		UX Series Burner A3	
WEIGHT:		SCALE:1:1		SHEET 1 OF 2	



[64/35] HIGH P.REGULATOR 5-35 PSI (0.34-2.4 BAR),
1/2" NPT. PROPANE CAPACITY 1,055kW "FISHER"

[6213] SOLENOID VALVE 2/2, SIZE 1/2"
COIL 230V/50Hz - ORIFICE 13MM "BURKERT"



DETAIL E
SCALE 1 : 7

[DS63A-0-25] P/GAUGE 0-25BAR 1/4"NPT, ITALY "NUOVA FIMA"

Note : This drawing is the property of PP Systems. Any complete or partial reproduction, or any transmission to third party without PP Systems authorization is forbidden.



ALL DIMENSIONS ARE IN MILLIMETERS			TITLE:	
NAME	SIGNATURE		Metal Fiber Burner	
Drawn	P.JATURONK	Jaturonk		
Improvement	P.SATIT	Satit P.	DWG NO.	J200618-D004
DATE:	1/7/2563	REVISION:	0	
WEIGHT:			SCALE:1:50	SHEET 7 OF 7